

IJETRM

International Journal of Engineering Technology Research & Management

Published By:

<https://www.ijetrm.com/>

EDUCATIONAL SUPPORT AND GUIDLINES

Ms. Buvana M , Rethina Prakash K S , Sabarikirivasan R , Sagar M

Department of Information Technology, Bachelor of Technology, Sri Shakthi Institute of Engineering and Technology (Autonomous), Coimbatore-641062.

ABSTRACT:

The motive of this project is to make opportunity to the persons in different stages to get a proper educational status in a right way. It can be of any helps in economical or emotional support. The present invention relates to a website designed to reduce illiteracy and provide accessible educational resources to under served populations. The website utilizes a comprehensive approach to deliver literacy and educational content through innovative features and user-friendly interfaces. The platform incorporates a multilingual educational framework to cater to diverse linguistic backgrounds. It includes interactive modules, audiovisual aids, and gamified learning experiences to enhance user engagement and learning retention. The website is structured to offer personalized learning paths, enabling users to progress at their own pace and according to their individual learning needs. Illiteracy remains a significant barrier to personal and societal development in many parts of the world. Traditional education systems often fail to reach marginalized communities due to various socioeconomic factors. This invention seeks to bridge the educational gap by offering a digital platform that transcends these barriers, providing opportunities for continuous learning and personal growth. Key functionalities include a personalized learning dashboard, real-time progress tracking, and interactive quizzes that adapt based on user performance. The website will also utilize gamification techniques to engage users and motivate consistent learning. Additional features such as live tutoring sessions, a supportive community forum, and offline access to lessons aim to enhance the overall learning experience., and educational psychology to create an accessible, adaptive, and engaging platform.. Here's how we can help you take the first steps towards a brighter future. This platform can be implemented on cloud-based servers, ensuring scalability and reliability. By offering a combination of educational guidance, financial support, and personalized mentorship, we aim to help you overcome any obstacles and achieve your learning goals. Remember, it's never too late to start learning, and we are here to help you every step of the way. Your future is bright, and we are excited to be part of your journey!

INTRODUCTION:

Education is a cornerstone of personal growth and societal development, and ensuring its effectiveness requires a robust system of support and well-defined guidelines. **Educational support** encompasses all the resources, strategies, and interventions designed to help learners overcome challenges, achieve academic success, and grow holistically. It addresses various aspects of education, including academic mentoring, psychological support, accessibility accommodations, career guidance, and technological assistance. The goal is to create an inclusive and equitable learning environment that caters to diverse needs, enabling every learner to realize their potential. On the other hand, **educational guidelines** serve as a structured framework to ensure consistency, quality, and accountability in the teaching-learning process. These guidelines outline expectations for students, educators, and institutions, providing clarity on roles, responsibilities, and best practices. They cover aspects like course objectives, learning outcomes, ethical conduct, assessment standards, and classroom policies. In essence, guidelines act as a roadmap, helping learners navigate their educational journey and empowering educators to deliver instruction effectively.

With the increasing complexity of modern education—driven by digital transformation, global interconnectedness, and diverse learner needs—educational support and guidelines have become more critical than ever. They help bridge gaps in access to education, address disparities in learning opportunities, and ensure a level playing field for all students. Moreover, they adapt to contemporary challenges, such as integrating technology into classrooms, providing remote learning opportunities, and supporting mental health and well-being in academic settings.

OBJECTIVES:

1. Enhance Academic Success

- Provide resources, tools, and strategies to help students achieve their academic goals.
- Offer personalized learning plans and interventions for diverse learning styles and abilities.

2. Foster Inclusivity and Equity

IJETRM

International Journal of Engineering Technology Research & Management

Published By:

<https://www.ijetrm.com/>

- Ensure all students, regardless of their background, ability, or socio-economic status, have equal access to quality education.
- Address specific needs of underrepresented or disadvantaged groups through tailored support systems.

3. Clarify Roles and Responsibilities

- Define the roles of students, educators, and institutions in the learning process.
- Establish clear guidelines for participation, conduct, and collaboration to ensure accountability.

4. Promote Consistency and Quality

- Standardize procedures for curriculum delivery, assessment, and grading to maintain fairness.
- Develop policies that align with institutional goals and regulatory standards.

5. Encourage Personal and Professional Development

- Support learners in acquiring not only academic knowledge but also critical life skills such as problem-solving, communication, and resilience.
- Provide opportunities for continuous professional development for educators.

LITERATURE SURVEY:

The literature on educational support and guidelines highlights their essential role in creating inclusive, effective, and equitable learning environments. Researchers consistently emphasize that comprehensive support systems significantly enhance student outcomes by addressing academic, emotional, and social needs. Tinto's work on academic integration underscores the importance of fostering a sense of belonging and support for student retention, while Universal Design for Learning (UDL) principles, as proposed by Hall and colleagues, advocate for flexible teaching frameworks that accommodate diverse learner needs. Similarly, Tomlinson's research on differentiated instruction demonstrates how personalized strategies can meet individual learning styles and abilities. Technological integration has also been widely discussed, with studies by Anderson and Dron exploring how online learning platforms, adaptive tools, and virtual tutoring expand access to quality education. Moreover, the role of emotional and psychological support, as seen in Durlak's meta-analysis on social-emotional learning, indicates a positive correlation between mental well-being and academic performance. However, challenges such as unequal access, inadequate resources, and systemic resistance, as identified by Fullan, highlight the need for targeted reforms and policies. Recent advancements, including AI-driven personalized learning tools, show promise in addressing these gaps. Overall, the literature reflects a growing recognition of the need for well-structured support systems and guidelines to foster a holistic, learner-centered educational experience.

METHODOLOGY:

The methodology for educational support and guidelines involves a comprehensive, systematic approach that aims to identify the unique needs of learners and educators, design tailored solutions, implement effective strategies, and continuously assess and improve the overall educational experience. It begins with a **needs assessment**, which employs surveys, interviews, and data analysis to uncover the academic, social, and emotional challenges faced by students, educators, and the institution. This step ensures that the support systems are grounded in the realities of the learning environment. Following this, **stakeholder engagement** plays a critical role, where educators, parents, students, and administrators collaborate to ensure that the guidelines and support mechanisms are relevant and responsive to actual needs. The next phase involves the **development of support systems and guidelines**, where best practices are researched, inclusive frameworks like Universal Design for Learning (UDL) are incorporated, and digital tools such as learning management systems (LMS) or adaptive learning technologies are considered. Once the frameworks are designed, the **implementation phase** ensures that the systems are deployed effectively, often starting with pilot programs or training workshops for educators. During this phase, it's crucial to monitor and evaluate the success of these interventions through performance metrics, surveys, and feedback loops. Finally, the **continuous improvement** phase allows for ongoing refinement of the guidelines and support systems, based on evaluation results, emerging trends, and new research. By following this structured yet adaptable methodology, institutions can create a dynamic, inclusive, and supportive educational environment that evolves to meet the changing needs of learners and educators.

EXISTING SYSTEM:

In an existing educational system, the integration of comprehensive educational support and well-defined guidelines is crucial to ensuring that students receive the assistance they need to succeed academically, socially, and emotionally. Academic support mechanisms such as tutoring services, remedial programs, and access to learning resources can address gaps in knowledge and help students stay on track with their coursework. These support systems must also cater to diverse learning needs, providing specialized

IJETRM

International Journal of Engineering Technology Research & Management

Published By:

<https://www.ijetrm.com/>

services like special education, accommodations for students with disabilities, and differentiated instruction strategies. Alongside academic support, emotional and psychological support is essential for promoting student well-being. Schools can offer counseling services, mental health resources, and peer mentoring programs to help students navigate personal challenges and build resilience. In terms of guidelines, educators must be equipped with clear frameworks for classroom management, lesson planning, and student assessment. These guidelines help create consistency in teaching practices, ensuring that all students receive a high-quality education.

DISADVANTAGES:

- Educational guidelines can lead to a "one-size-fits-all" approach that fails to account for individual learning needs.
- Many schools, especially those in underfunded areas, struggle to provide necessary support services like tutoring, special education, and counseling.
- The development and enforcement of guidelines can add substantial administrative work, distracting educators from focusing on teaching.
- Support programs, such as special education or remedial tutoring, can lead to students feeling isolated or "different," creating social stigma.

PROPOSED SYSTEM:

The **proposed system** for educational support and guidelines seeks to transform traditional educational models by prioritizing personalized learning, mental health and emotional well-being, technological integration, and equity in access to resources. At the core of this system is the understanding that each student has unique learning needs, and as such, educational support should be individualized to cater to these differences. **Personalized learning** is achieved through the use of adaptive learning technologies, where AI-driven platforms assess each student's strengths and weaknesses in real-time, adjusting the pace and content of lessons accordingly. This allows for a more customized learning experience that empowers students to learn at their own pace, whether they are excelling or need additional assistance. In addition to academic support, the system incorporates **mental health and emotional support**, providing students with access to counseling services, peer support networks, and well-being check-ins, ensuring that emotional challenges do not impede academic success.

ACKNOWLEDGEMENT:

I would like to express my deepest gratitude to all those who have contributed to the successful completion of this research on educational support and guidelines. First and foremost, I would like to extend my heartfelt thanks to my **supervisor**, whose expert guidance, encouragement, and insightful feedback have been pivotal throughout this process. Their patience and valuable advice have shaped the direction of this research, and their unwavering support has been a constant source of inspiration. I am also sincerely grateful to the **educators, administrators, and support staff** in the educational sector who shared their experiences and expertise, providing me with real-world perspectives that significantly enhanced the depth and applicability of this work. Their dedication to fostering inclusive, effective learning environments has informed the very principles of this research. A special thanks to the **students, parents, and school leaders** who willingly participated in interviews and surveys, offering their insights, feedback, and suggestions. Their contributions have allowed me to better understand the challenges and needs within the education system, thereby strengthening the relevance and practicality of the proposed guidelines.

MODULE DESCRIPTION:

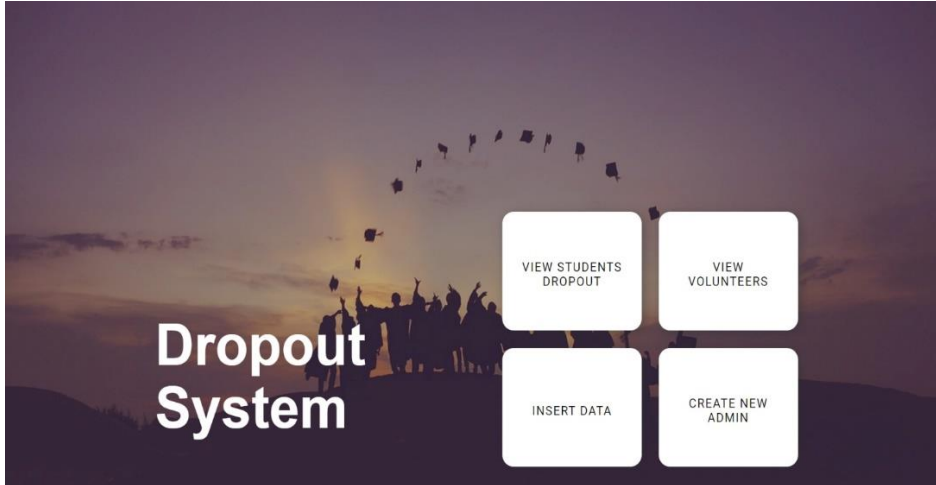
1. USER LOGIN:
 - Users can log in by entering their credentials, which are validated against the database.
2. USER SIGNUP
 - Users input their details (username, email, password) and are added to the database (or simulated storage in this example).
3. CHATBOT CONVERSATION
 - The front-end allows the user to interact with a simple chatbot that can respond based on basic input keywords .

IJETRM

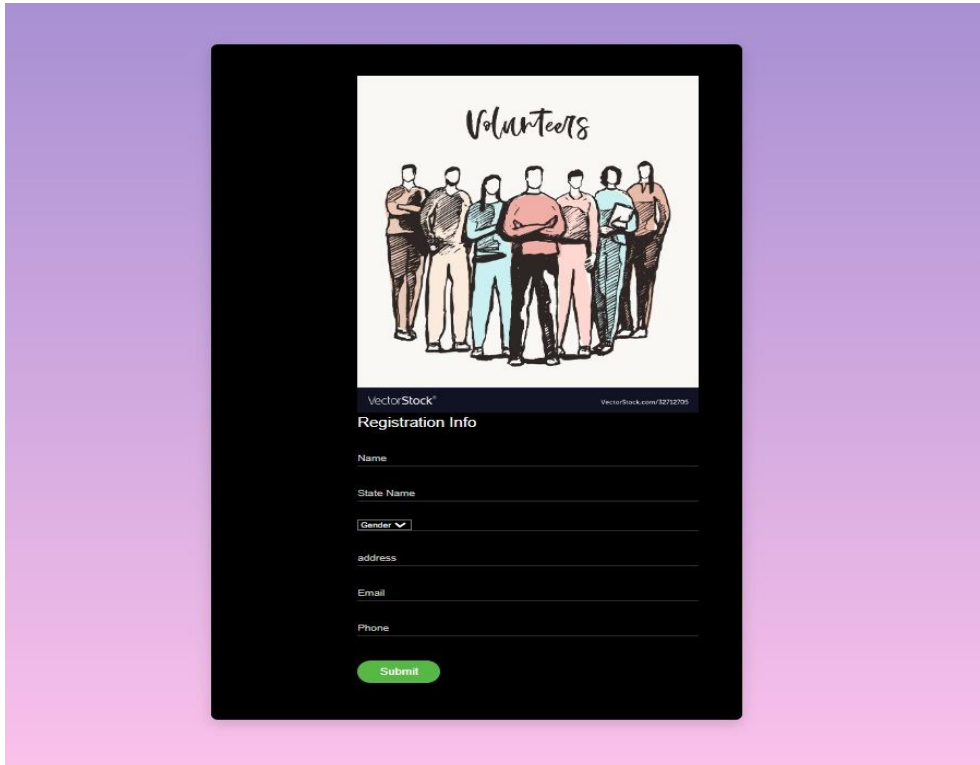
International Journal of Engineering Technology Research & Management

Published By:
<https://www.ijetrm.com/>

HOME PAGE:



LOGIN PAGE:



IJETRM

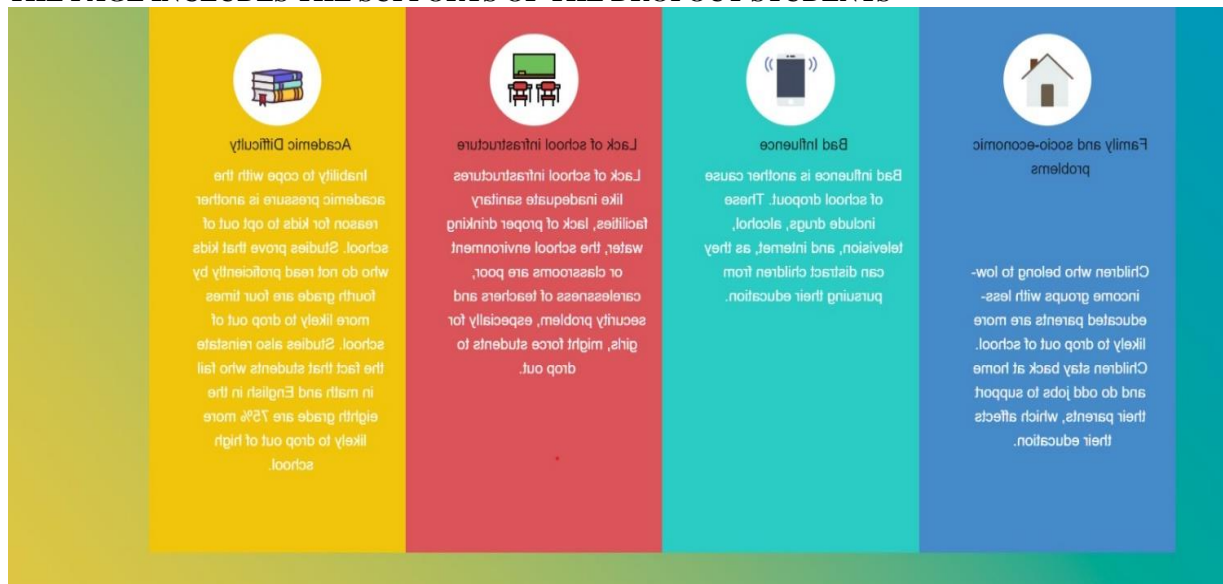
International Journal of Engineering Technology Research & Management

Published By:
<https://www.ijetrm.com/>

FRONT PAGE:



THE PAGE INCLUDES THE SUPPORTS OF THE DROPOUT STUDENTS



CONCLUSION:

The **Educational Support and Guidelines** module plays a vital role in fostering a supportive and inclusive learning environment. By equipping educators with the necessary tools and strategies, this module ensures that teaching is student-centered, adaptable to diverse learning needs, and focused on personal growth. It emphasizes the importance of inclusivity, ensuring that all students, including those with disabilities or learning differences, are supported. Differentiated instruction, continuous assessment, and feedback further enhance the learning experience, allowing students to thrive at their own pace. Creating a positive and collaborative environment is crucial for

IJETRM

International Journal of Engineering Technology Research & Management

Published By:

<https://www.ijetrm.com/>

boosting student motivation, resilience, and success. Overall, the implementation of these strategies leads to improved educational outcomes, helping students reach their full potential while encouraging ongoing professional development for educators to maintain these best practices.

REFERENCES:

1. **Black, P., & Wiliam, D. (1998).** *Assessment and Classroom Learning. Assessment in Education: Principles, Policy & Practice*, 5(1), 7-74.
2. **McLeskey, J., & Waldron, N. L. (2011).** *Creating Inclusive Schools: A Handbook for Education Leaders.*
3. **Hattie, J. (2009).** *Visible Learning: A Synthesis of Over 800 Meta-Analyses Relating to Achievement.*
4. **The Department for Education (2015).** *Special Educational Needs and Disability Code of Practice: 0 to 25 Years.*
5. **UNESCO (2009).** *Policy Guidelines on Inclusion in Education.*
6. **Fisher, D., & Frey, N. (2014).** *Better Learning Through Structured Teaching: A Framework for the Gradual Release of Responsibility*